

Beaver County 2024

Over the last decade, no county in southwestern Pennsylvania has seen a transformation quite like Beaver County. With the announcement and construction of Shell Polymers' multibillion-dollar ethylene and polyethylene manufacturing facility, and it starting commercial production in 2023, unprecedented growth and opportunity abound in Beaver County. The beauty is that Beaver County continues to retain its wonderful sense of place and neighbor-helping-neighbor attitude toward building a bright future for our diverse community.

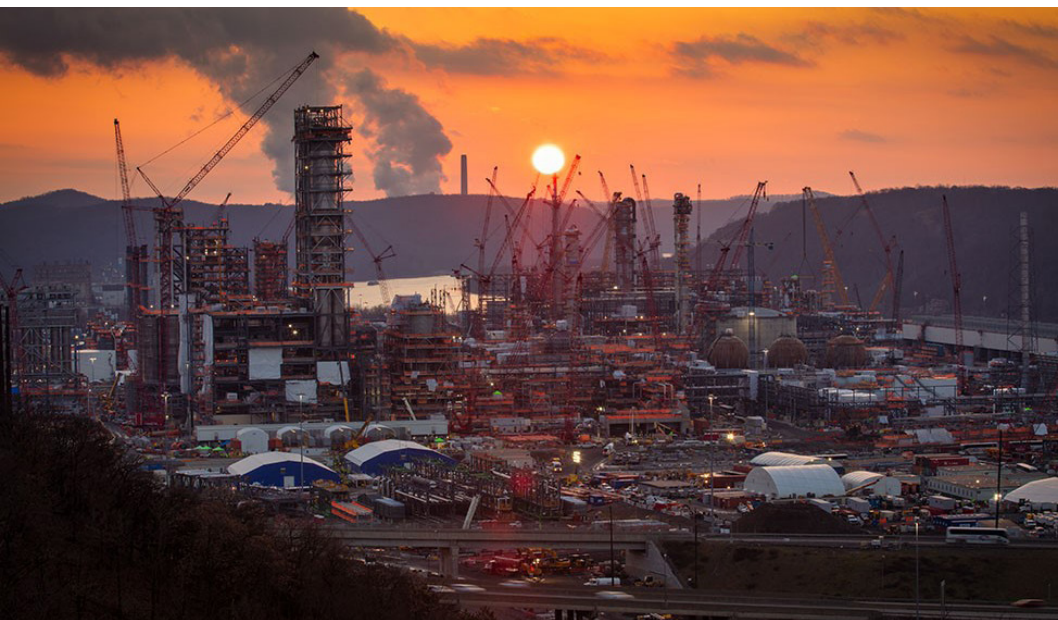


From our farmlands and parks to our legacy riverfront communities and bustling townships, Beaver County aspires to be part of a region that provides the best environment in which one can live, work, do business, and raise a family. Our diverse economy has had remarkable growth, including opportunities in education, healthcare, energy and advanced manufacturing, finance, retail and hospitality.

With low taxes and affordable housing, Beaver County has become attractive for young families starting a family to baby boomers downsizing and easing into retirement. Coupled with the beauty of our miles of Beaver and Ohio Rivers that cut through our landscape, is a wonderful quality of life that unites Beaver Countians. Beaver County has a unique small-town feel that makes you feel at home no matter where you find yourself among our 53 municipalities. We have a lifestyle pace that matches everyone's stride.

The collaborative small-town feel is highlighted by a historic partnership among our institutions of higher learning. The leaders of the Community College of Beaver County (CCBC), Geneva College, and Penn State University—Beaver Campus have formed something called the Bridges and Pathways College Partnership. The institutions share articulation agreements, curriculum and cultural exchanges. They work alongside each other in support of one another and the community at large, whether it is the annual common book read, shared scholarship programs or the signature Penn State Launch Box (focusing on entrepreneurs and small businesses).

Also unique is CCBC's High School Academy program which was the recipient of the Carnegie Science Center's Leadership in STEM Education Award. High school students enrolled in the program can earn college credits and a career-oriented education in the fields of aviation, health, STEM, criminal justice



and construction. Over 1000 high school juniors and seniors have thus far participated in this innovative dual enrollment program and graduate with one year of credits toward an associate degree or programs at other colleges and universities. A great, affordable option for our youth who will become the future employees, business owners, and community leaders of our region. In addition, the \$5 million Shell Center for Process Technology opened recently and is preparing a new generation of workers for the region's advanced manufacturing industry.

Nothing has been more instrumental in defining and developing Beaver County than our rivers. It is our rivers that unite us people and geographically defined us. The twists and

turns of the Beaver River to the north, and the Ohio River that traverses through the heart of the County, formed the opportunity for industry and commerce to establish itself. Likewise, the population density follows those riverfront paths. But unlike the past, the rivers are much more to us than the industrial highway of years gone by. The federal government is in the midst of spending significant infrastructure dollars on upgrading the lock-and-dam system so key to continued good functioning local, statewide and countywide shipping and commerce. New initiatives to ensure the beauty and value of our riverfronts are taking place across many communities. There is a new grassroots engagement of community members creating eco-districts among our river towns. RiverWise is a remarkable engagement of diverse groups coming together to collaborate on our future.

The county is already host to many recreational and entertainment opportunities. From Lincoln Park Performing Arts Center to Pittsburgh International Raceway to Brady's Run Park to our many historical sites. Beaver Countians also take care of one another using their time, talents and resources to support and manage organizations like The Franklin Center, the Beaver County Educational Trust, Big Brothers and Sisters, March of Dimes, and the United Way of Beaver County.

With new people and emerging industries choosing Beaver County as its home, the Beaver County Chamber of Commerce, Beaver County Corporation for Economic Development, Beaver County Job Training, and Beaver County Regional Council of Governments are several of the many organizations helping guide our revitalization. There is truly something for everyone in the rich tradition and history of Beaver County, and we welcome all to join us.



COUNTY FACTS

- 2022 Population: **165,677**
- Total Number of Municipalities: **54**
- County Seat: Beaver
- Land Area (sq. mi.): **434.7**
- 2022 Population Density (people per mile): **381.1**
- 2022 Total number of employers: **3,662**
- 2022 Total jobs in county: **49,281**
- 2022 Total labor force: **81,913**
- 2022 Total employed residents: **77,524**
- 2022 Earnings per job (mean): **\$57,837**
- 2022 Median household income: **\$67,194**
- 2021 - 2022 Public High School Graduates: **2,802**
- Post-secondary placement rate: **53.0%**
- 2022 Population 25 and over: **121,994**
- with high school degree or higher: **95.5%**
- with bachelor's degree or higher: **27.0%**

Sources: PA Department of Education, PA Department of Labor & Industry, U.S. Census Bureau, U.S. Bureau of Labor Statistics

Largest Municipality:
2022 Hopewell Township: Pop 13,341

Additional municipalities:
Aliquippa
Ambridge
Beaver Falls
Center Township



Photos by Emmanuel Fine Art Photography - www.epphoto.net



Economic Development Contact:

Lewis Villotti, President
Beaver County Corporation for
Economic Development
250 Insurance St., Suite 300
Beaver, PA 15009
Phone: 724.728.8610
Fax: 724.728.3666

Beaver County

Board of Commissioners:

The Honorable Daniel C. Camp
III, Chair
The Honorable Jack Manning
The Honorable Tony Amadio
Beaver County Courthouse
810 Third St., Beaver, PA 15009
Phone: 724.728.5700
Fax: 724.728.0725

TOP PRIVATE EMPLOYERS

EMPLOYER	PRODUCT(S)	EMPLOYEES
Heritage Valley Medical Group.....	Health Care	1,100
Energy Harbor	Utility	1,000
Wal-Mart Associates Inc.	Retail	700
Beaver Valley Nuclear Plant	Energy	600
Giant Eagle	Retail	600
Veka Inc.....	Manufacturing.....	600
Shell	Manufacturing.....	600
Mailing Services of Pittsburgh.....	Business Services	600

Sources: Beaver County Chamber of Commerce, P.A. Department of Labor & Industry

www.co.beaver.pa.us